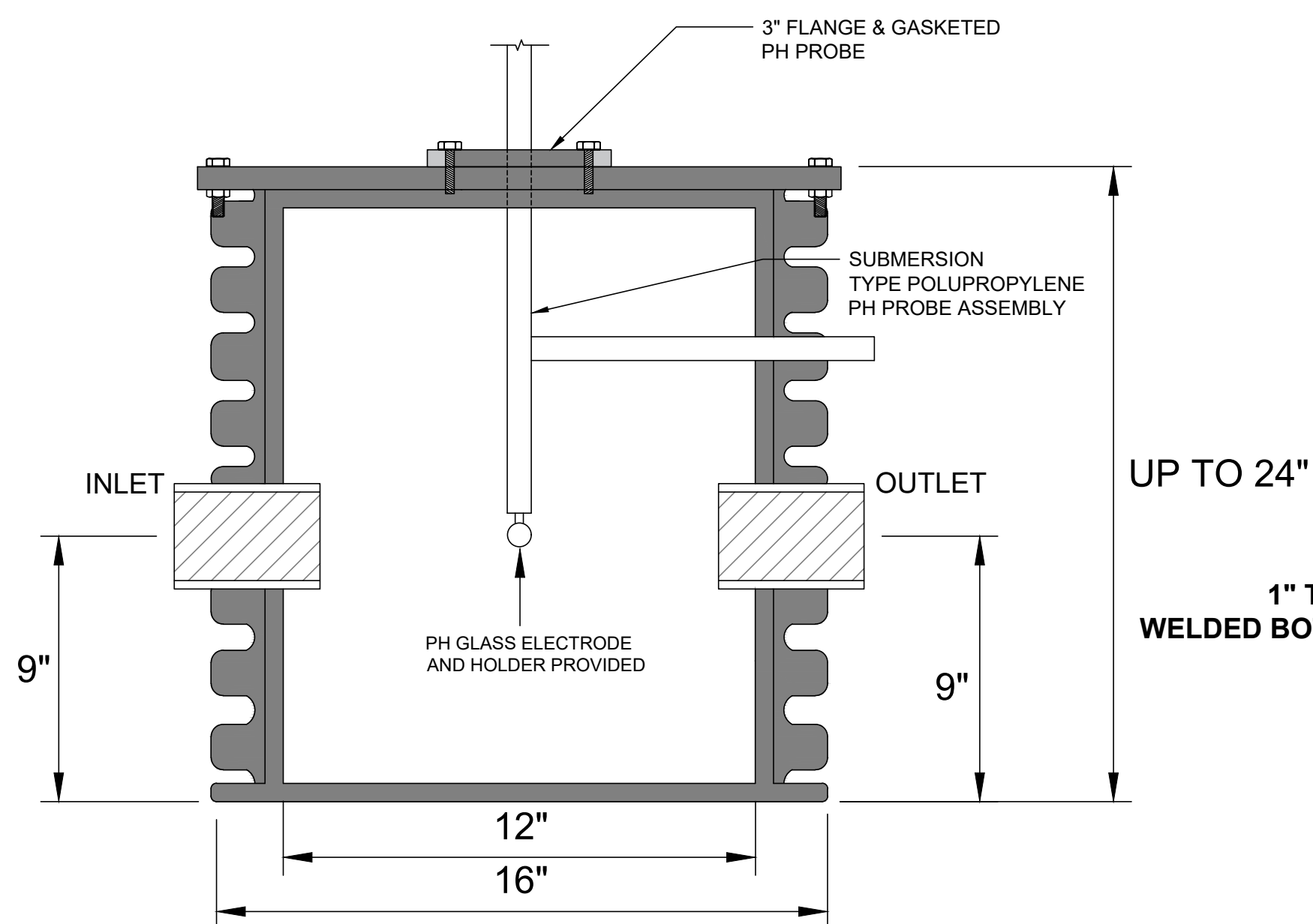


A schematic diagram of a circular reactor. The reactor is represented by a large circle divided into eight equal segments by four diameters. A smaller concentric circle is centered within the large circle. Four ports are attached to the outer boundary of the large circle: a rectangular port at the top, a rectangular port at the bottom, a trapezoidal port on the left, and a trapezoidal port on the right. The left trapezoidal port is labeled "INLET" and the right trapezoidal port is labeled "OUTLET". An arrow points from the right towards the reactor, indicating the direction of flow into the OUTLET port.

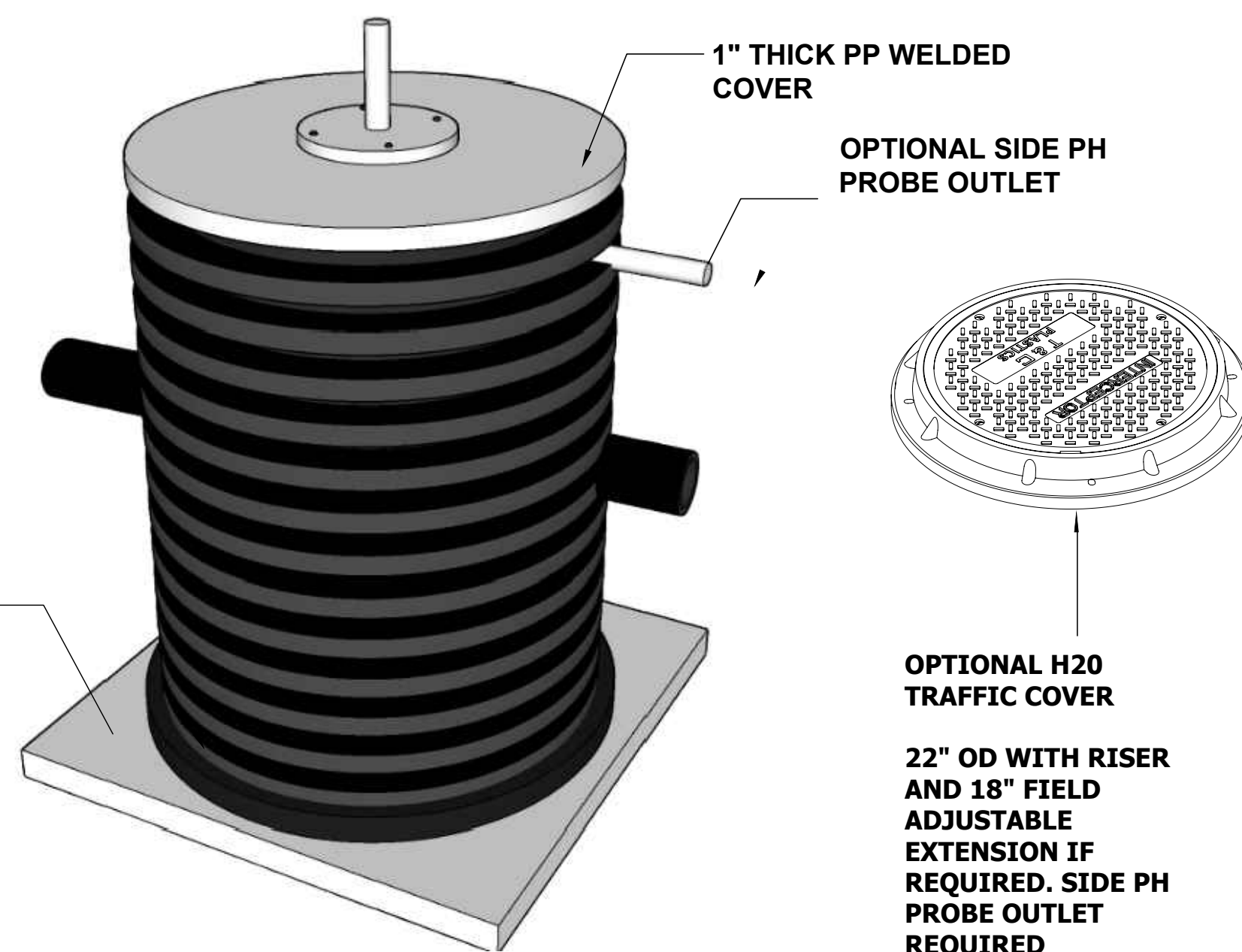
	FITTING SIZE	FITTING TYPE (MPT OR PLAIN END)	FITTING CENTERLINE	FITTING CENTERLINE (IF DIFFERENT THAN STANDARD)
INLET			9"	
OUTLET			9"	
VENT (IF NEEDED)			N/A	

OPTIONS (CIRCLE)	
EXTENSION TO GRADE	_____ (FILL IN HEIGHT REQUIRED FROM BASE TO TOP OF COVER)
VEHICULAR TRAFFIC COVER	

STANDARD FITTING LOCATIONS SHOWN.
PLEASE CIRCLE CHANGES ON TOP VIEW



SECTION VIEW



TANK GALLON CAPACITY:	WELDED BY:	UNLESS STATED OTHERWISE DIMENSIONS ARE IN INCHES	MATERIAL: <div>HDPE</div>				TITLE: <div>NTB-5M/ HDPE DIRECT BURIAL SAMPLING TANK</div>	NTB SERIES	REV:	<div>T&C PLASTICS</div> <div>WWW.TANDCPLASTICS.COM</div> <div>732-780-5300</div>
TANK GALLON CAPACITY WITH LIMESTONE:	COMPLETED BY:		WEIGHT [lb]: <div>----</div>		NAME	DATE		SHEET 1 OF 1	SIZE:	
LIMESTONE REQUIRED:	REVIEWED BY:		DO NOT SCALE DRAWING	CHECKED				SCALE: 1:2		
THE INFORMATION CONTAINED IN THIS DRAWING IS THE SOLE PROPERTY OF TOWN & COUNTRY PLASTICS LLC. ANY REPRODUCTION IN PART OR AS A WHOLE WITHOUT THE WRITTEN PERMISSION OF TOWN & PLASTICS LLC IS PROHIBITED.										

THE INFORMATION CONTAINED IN THIS DRAWING IS THE SOLE PROPERTY OF TOWN & COUNTRY PLASTICS LLC. ANY REPRODUCTION IN PART OR AS A WHOLE WITHOUT THE WRITTEN PERMISSION OF TOWN & PLASTICS LLC IS PROHIBITED.