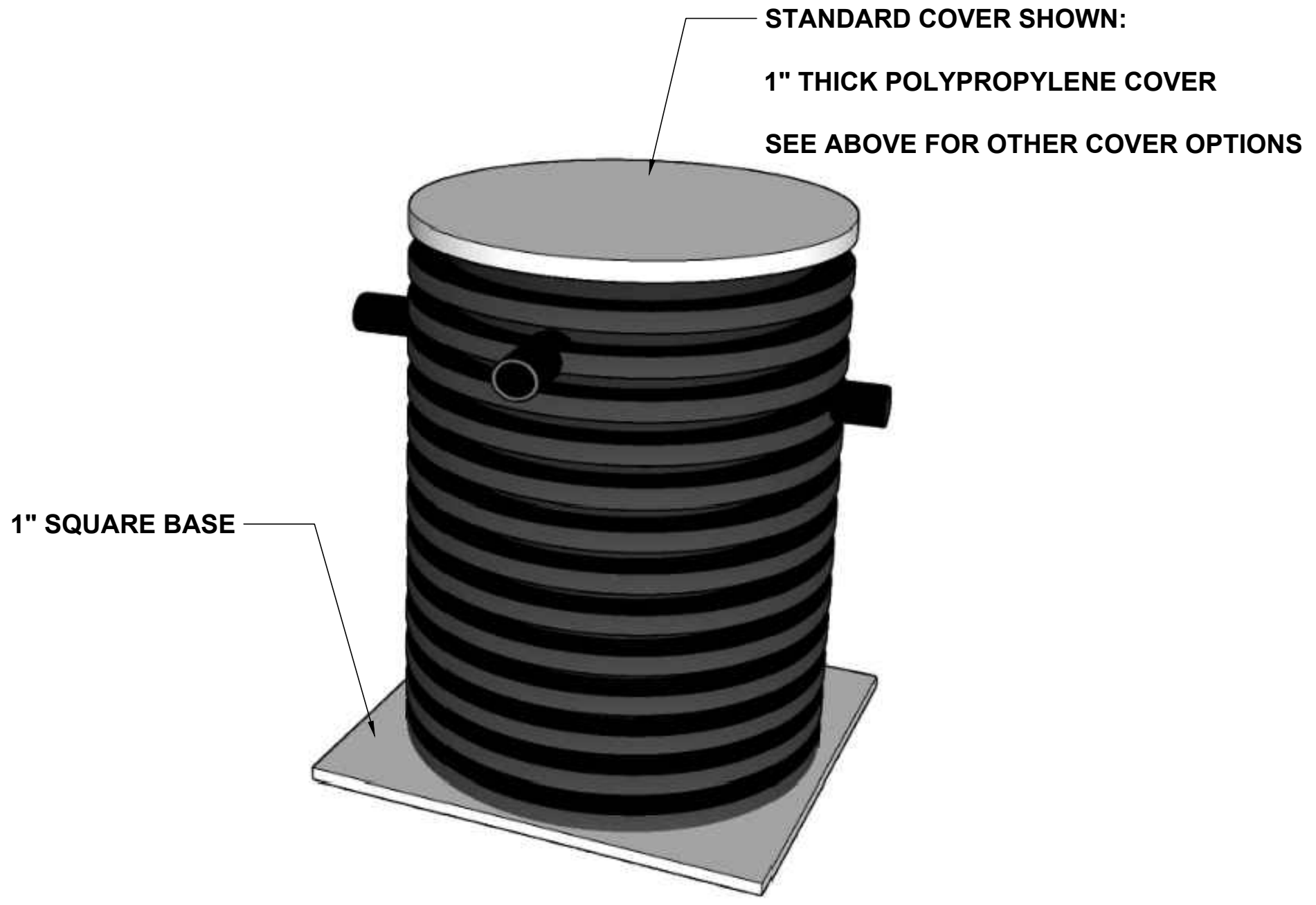
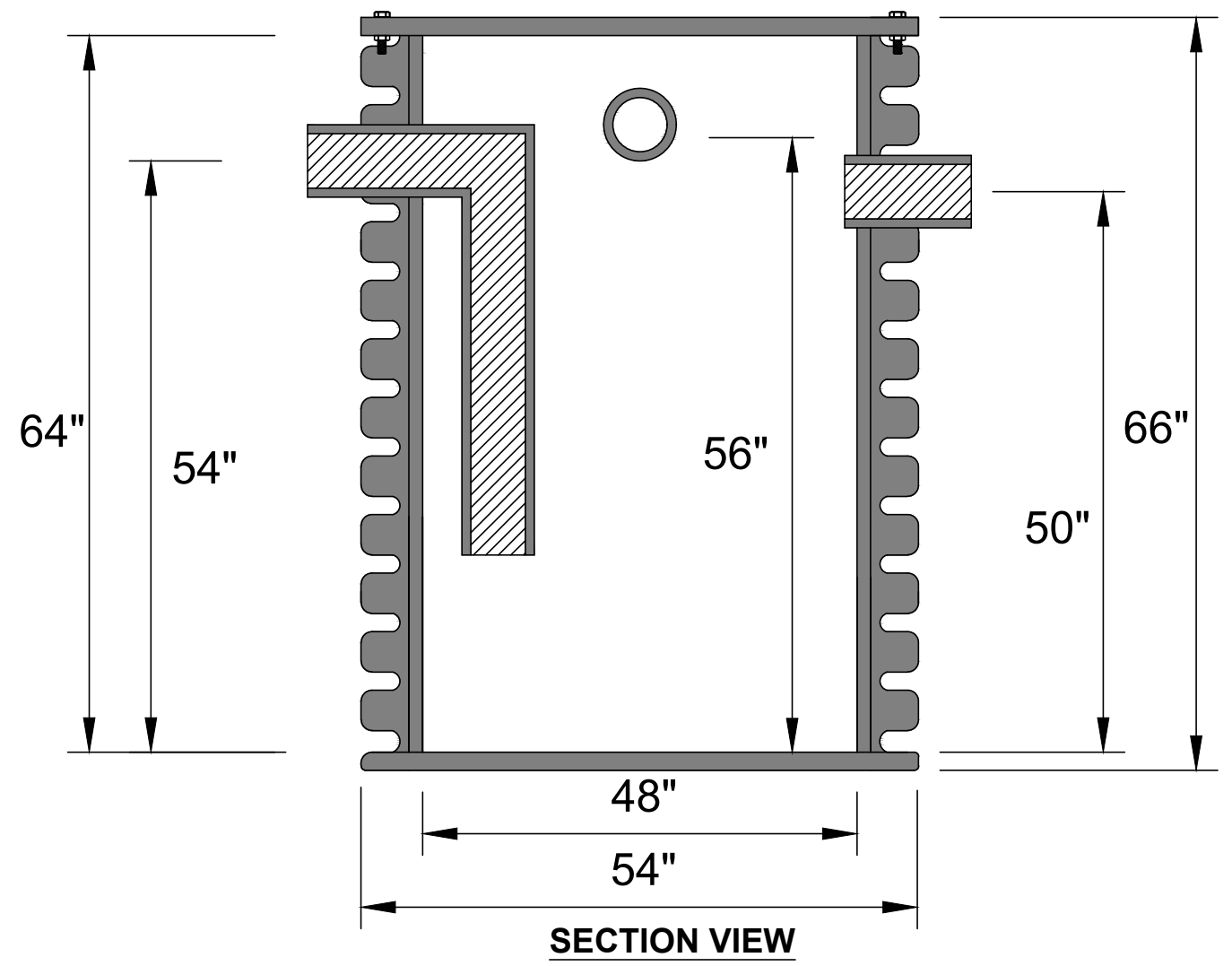


	FITTING SIZE	FITTING TYPE (MPT OR PLAIN END)	FITTING CENTERLINE	FITTING CENTERLINE (IF DIFFERENT THAN STANDARD)
INLET			54"	
OUTLET			50"	
VENT (IF NEEDED)			56"	

OPTIONS (CIRCLE)	
EXTENSION TO GRADE	_____ (FILL IN HEIGHT REQUIRED FROM BASE TO TOP OF COVER)
HD COVER	1/8" STEEL OVER POLYPRO FOR HEAVY PEDESTRIAN TRAFFIC
VEHICULAR TRAFFIC COVER	



TANK GALLON CAPACITY: 395	WELDED BY:	UNLESS STATED OTHERWISE DIMENSIONS ARE IN INCHES	MATERIAL: HDPE			TITLE:	NTB SERIES	REV:	 WWW.TANDCPLASTICS.COM 732-780-5300
TANK GALLON CAPACITY WITH LIMESTONE: 132	COMPLETED BY:		WEIGHT [lb]: 225 LBS.	NAME	DATE	NTB-500 / HDPE DIRECT BURIAL TANK	SHEET 1 OF 1	SIZE:	
LIMESTONE REQUIRED: 5,000 LBS.	REVIEWED BY:		DO NOT SCALE DRAWING	DRAWN	DR	09/10/2022	SCALE: 1:2		

THE INFORMATION CONTAINED IN THIS DRAWING IS THE SOLE PROPERTY OF TOWN & COUNTRY PLASTICS LLC. ANY REPRODUCTION IN PART OR AS A WHOLE WITHOUT THE WRITTEN PERMISSION OF TOWN & PLASTICS LLC IS PROHIBITED.