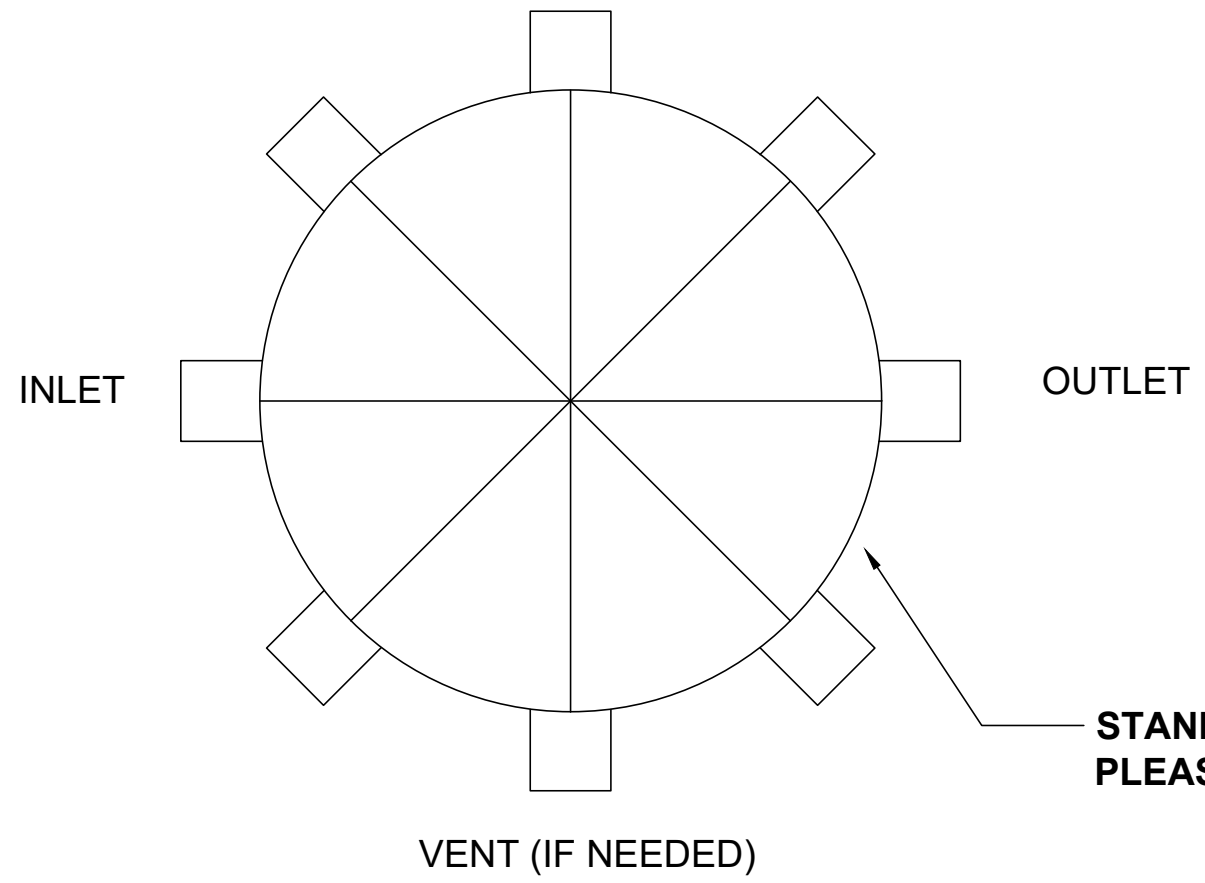


4 3 2 1

TOP VIEW

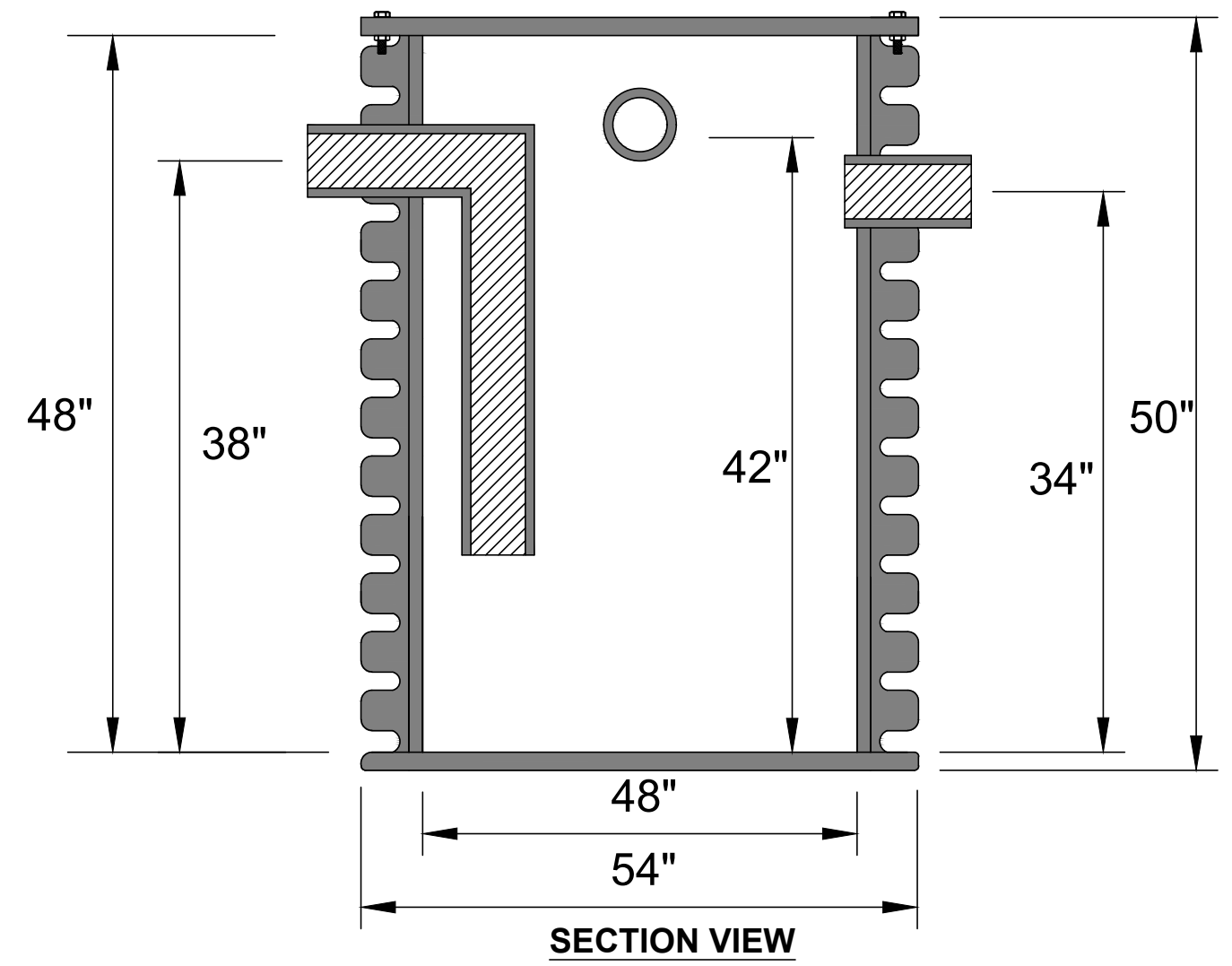


	FITTING SIZE	FITTING TYPE (MPT OR PLAIN END)	FITTING CENTERLINE	FITTING CENTERLINE (IF DIFFERENT THAN STANDARD)
INLET			38"	
OUTLET			34"	
VENT (IF NEEDED)			42"	

OPTIONS (CIRCLE)	
EXTENSION TO GRADE	_____ (FILL IN HEIGHT REQUIRED FROM BASE TO TOP OF COVER)
HD COVER	1/8" STEEL OVER POLYPRO FOR HEAVY PEDESTRIAN TRAFFIC
VEHICULAR TRAFFIC COVER	

STANDARD FITTING LOCATIONS SHOWN. PLEASE CIRCLE CHANGES ON TOP VIEW

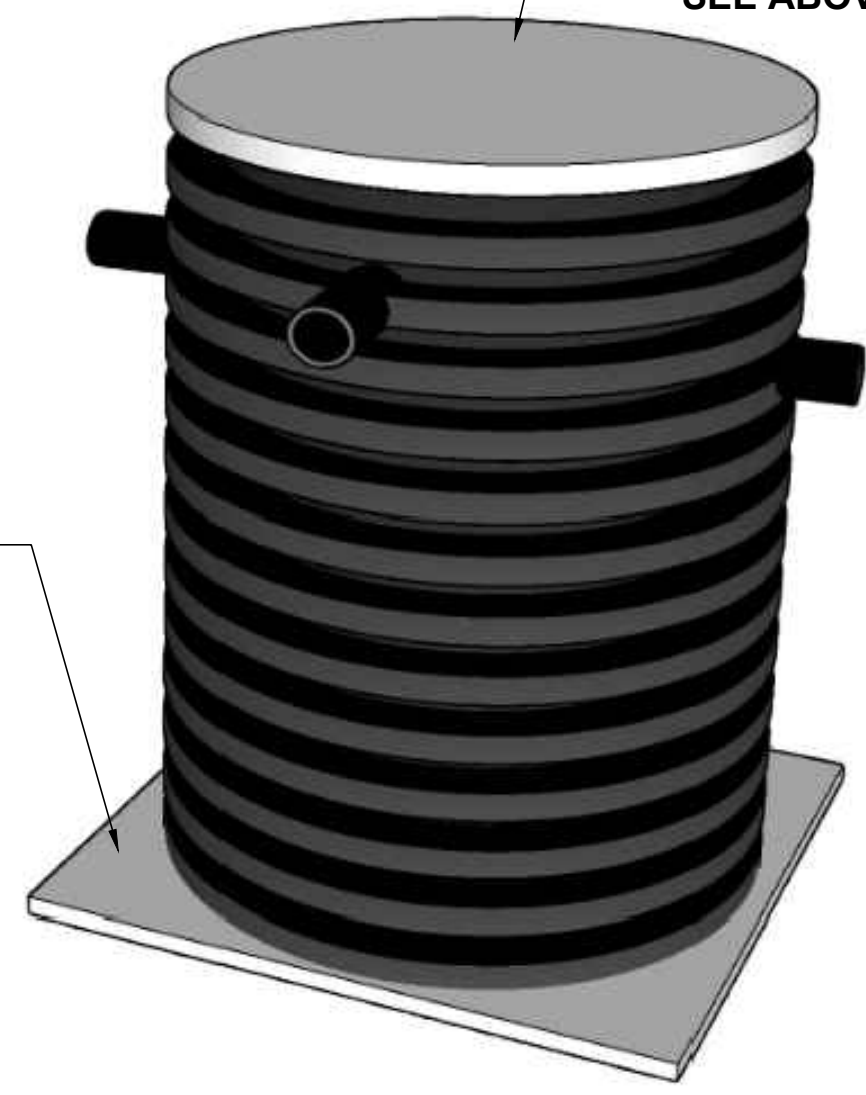
VENT (IF NEEDED)



SECTION VIEW

STANDARD COVER SHOWN:
1" THICK POLYPROPYLENE COVER
SEE ABOVE FOR OTHER COVER OPTIONS

1" SQUARE BASE



TANK GALLON CAPACITY: 243	WELDED BY:	UNLESS STATED OTHERWISE DIMENSIONS ARE IN INCHES	MATERIAL: HDPE			TITLE:	NTB SERIES	REV:	 WWW.TANDCPLASTICS.COM 732-780-5300
TANK GALLON CAPACITY WITH LIMESTONE: 81	COMPLETED BY:		WEIGHT [lb]: 200 LBS.	NAME	DATE	NTB-350 / HDPE DIRECT BURIAL TANK	SHEET 1 OF 1	SIZE:	
LIMESTONE REQUIRED: 4,000 LBS.	REVIEWED BY:		DO NOT SCALE DRAWING	CHECKED			SCALE: 1:2		

THE INFORMATION CONTAINED IN THIS DRAWING IS THE SOLE PROPERTY OF TOWN & COUNTRY PLASTICS LLC. ANY REPRODUCTION IN PART OR AS A WHOLE WITHOUT THE WRITTEN PERMISSION OF TOWN & PLASTICS LLC IS PROHIBITED.

4 3 2 1