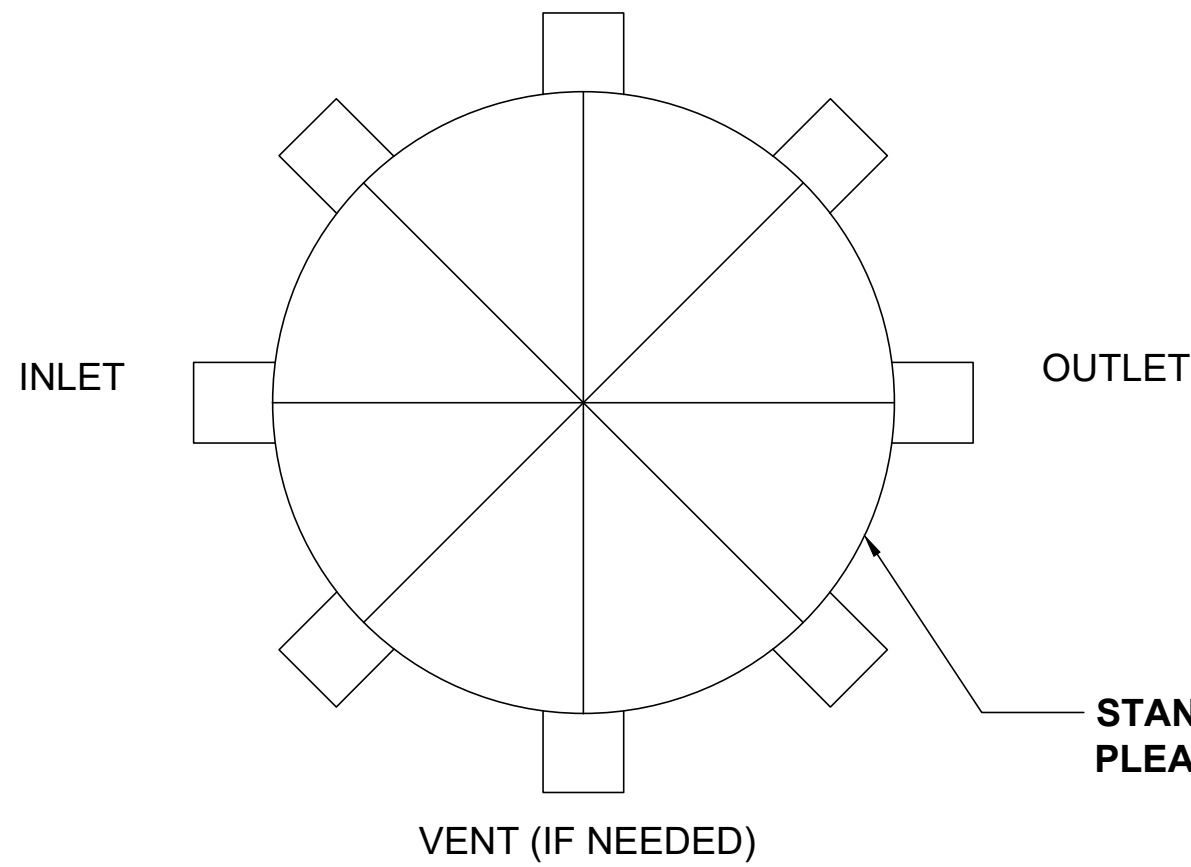


4 3 2 1

**TOP VIEW**

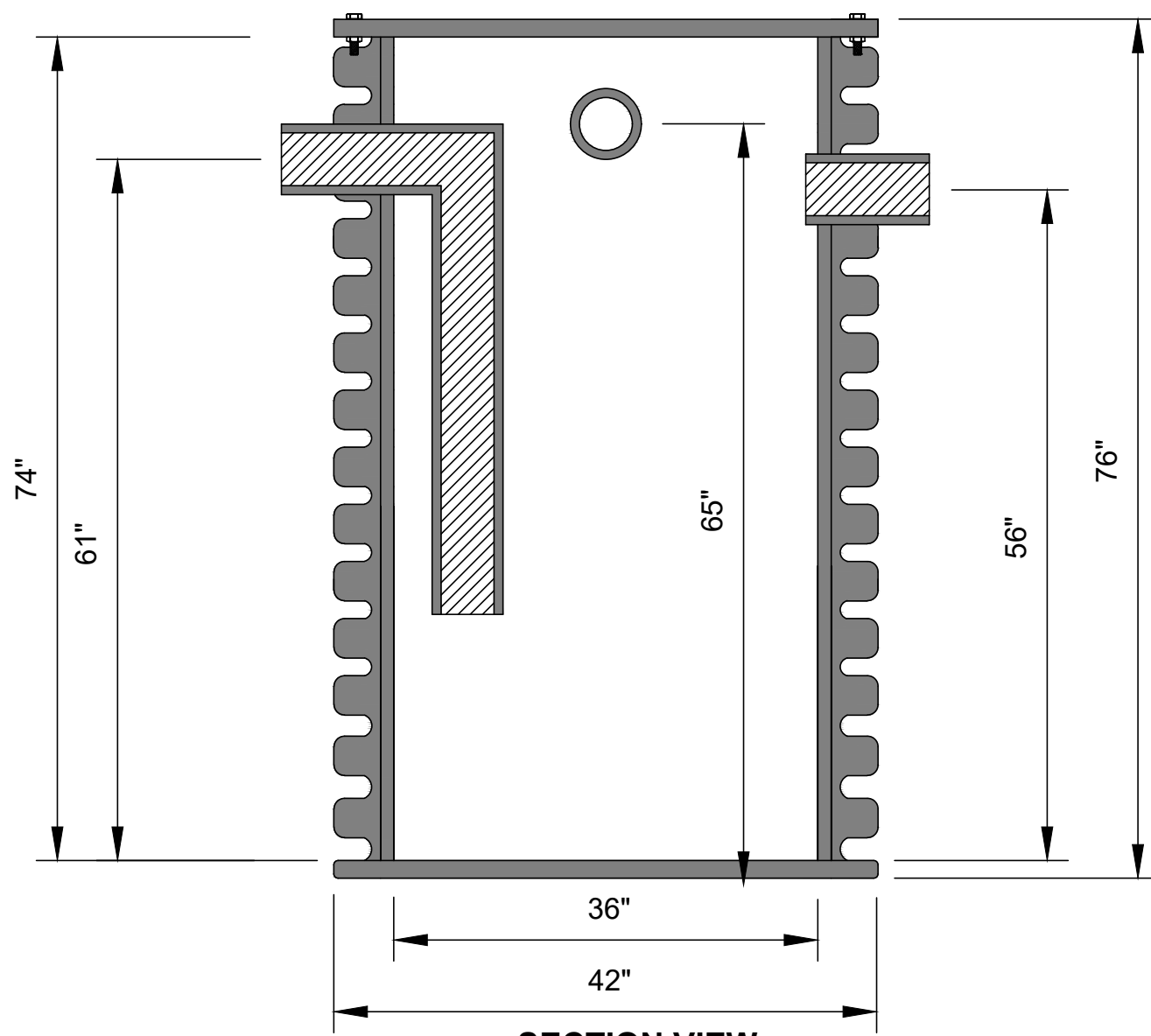


	FITTING SIZE	FITTING TYPE (MPT OR PLAIN END)	FITTING CENTERLINE	FITTING CENTERLINE (IF DIFFERENT THAN STANDARD)
INLET			61"	
OUTLET			56"	
VENT (IF NEEDED)			65"	

OPTIONS (CIRCLE)	
EXTENSION TO GRADE	_____ (FILL IN HEIGHT REQUIRED FROM BASE TO TOP OF COVER)
HD COVER	1/8" STEEL OVER POLYPRO FOR HEAVY PEDESTRIAN TRAFFIC
VEHICULAR TRAFFIC COVER	

STANDARD FITTING LOCATIONS SHOWN.  
PLEASE CIRCLE CHANGES ON TOP VIEW

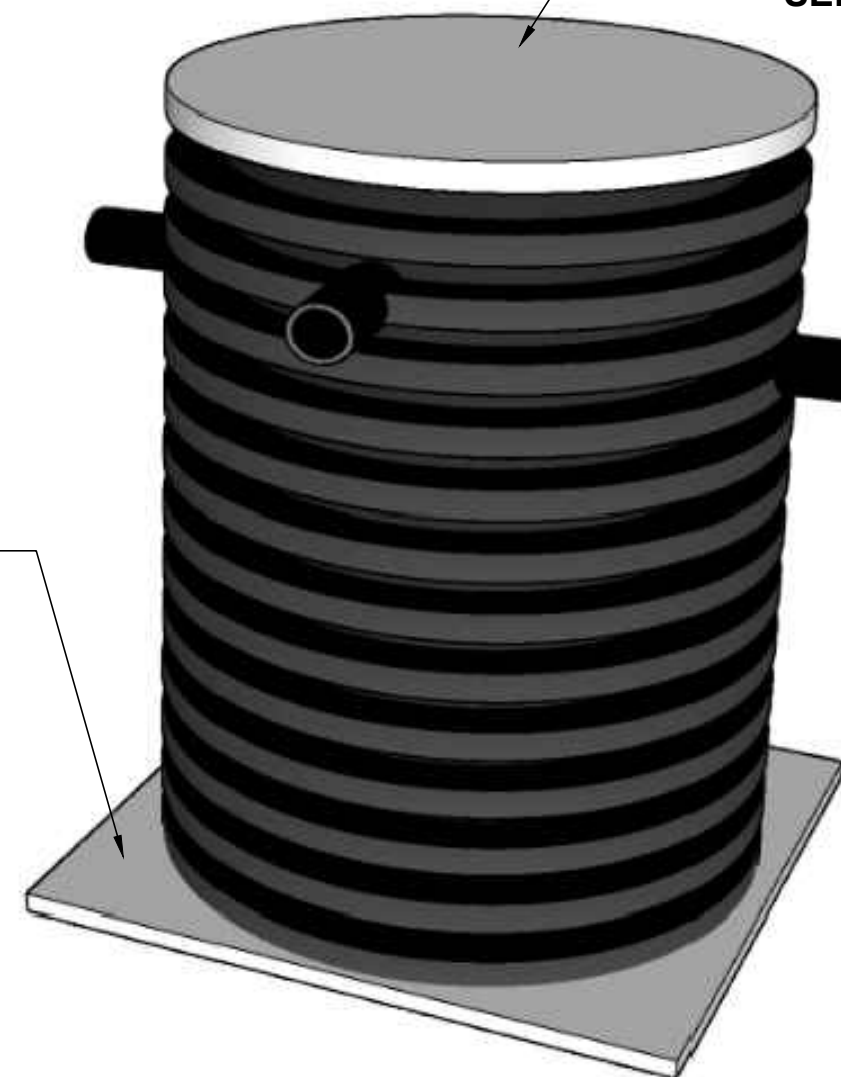
VENT (IF NEEDED)



**SECTION VIEW**

STANDARD COVER SHOWN:  
1" THICK POLYPROPYLENE COVER  
SEE ABOVE FOR OTHER COVER OPTIONS

1" SQUARE BASE



TANK GALLON CAPACITY: <b>230</b>	WELDED BY:	UNLESS STATED OTHERWISE DIMENSIONS ARE IN INCHES	MATERIAL: HDPE			TITLE: <b>NTB-300 / HDPE DIRECT BURIAL TANK</b>	NTB SERIES	REV:	 WWW.TANDCPLASTICS.COM 732-780-5300
TANK GALLON CAPACITY WITH LIMESTONE: <b>76</b>	COMPLETED BY:		WEIGHT [lb]: <b>175 LBS.</b>	NAME	DATE	SHEET 1 OF 1	SIZE:		
LIMESTONE REQUIRED: <b>3,200 LBS.</b>	REVIEWED BY:		DO NOT SCALE DRAWING	CHECKED		SCALE: 1:2			
THE INFORMATION CONTAINED IN THIS DRAWING IS THE SOLE PROPERTY OF TOWN & COUNTRY PLASTICS LLC. ANY REPRODUCTION IN PART OR AS A WHOLE WITHOUT THE WRITTEN PERMISSION OF TOWN & PLASTICS LLC IS PROHIBITED.									

4 3 2 1