

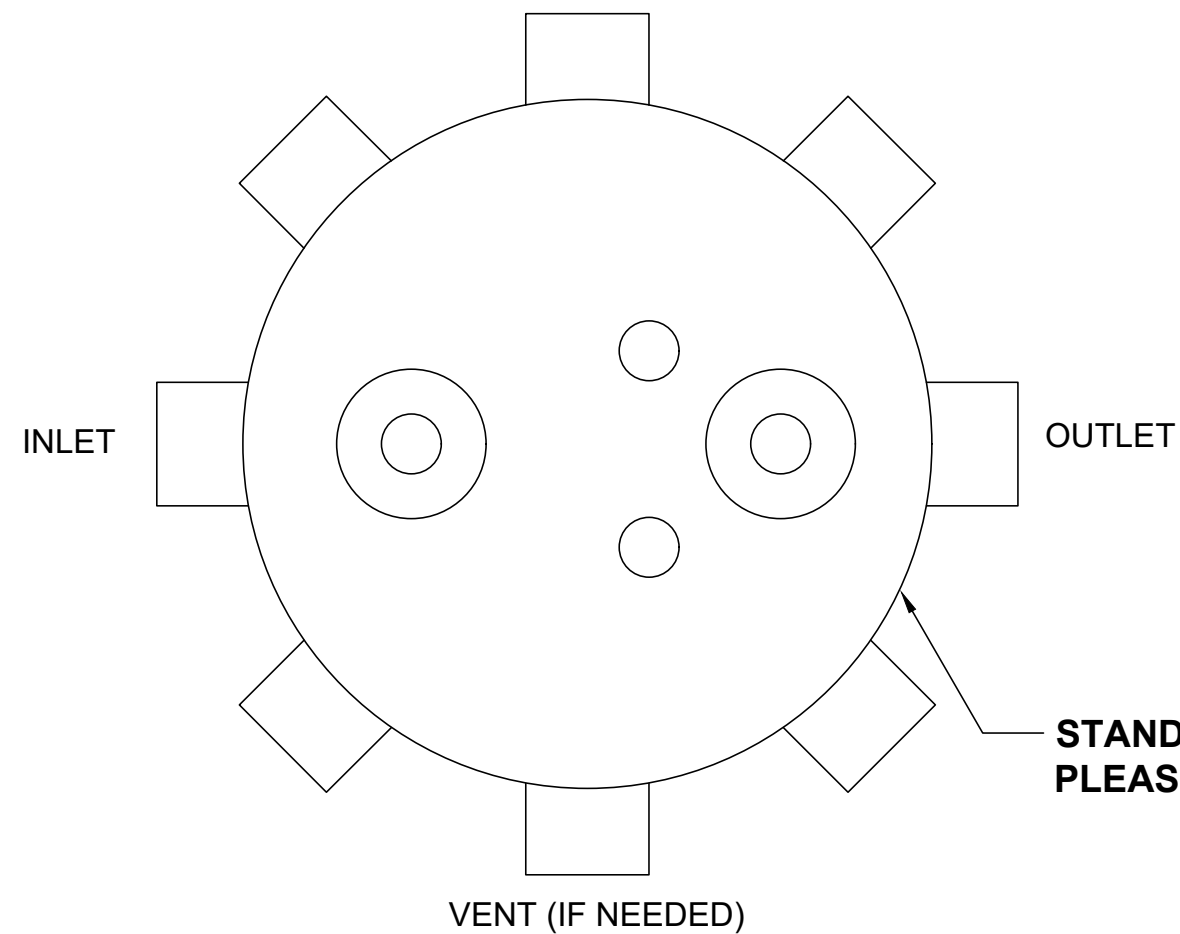
4

3

2

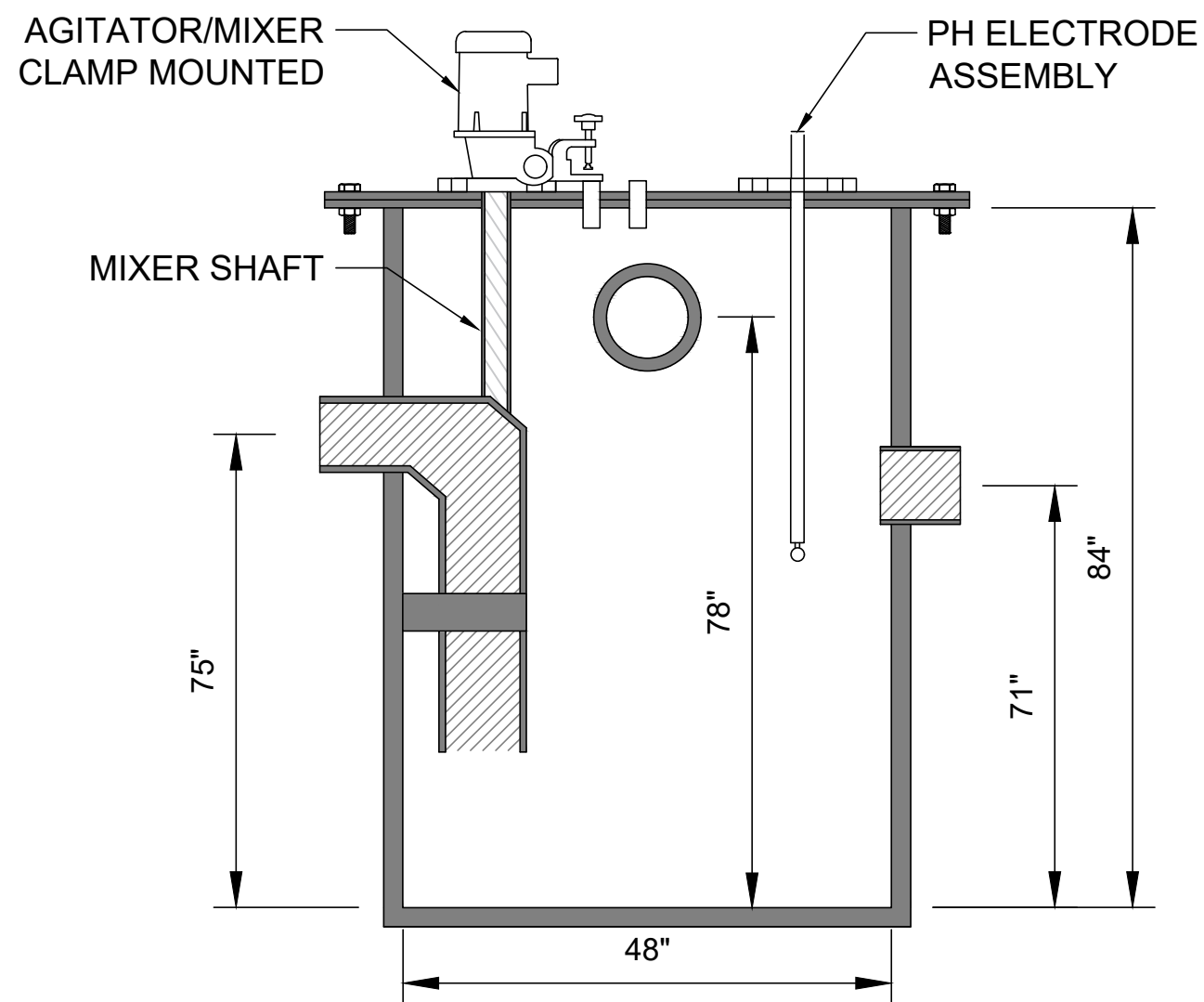
1

TOP VIEW



	FITTING SIZE	FITTING TYPE (MPT OR PLAIN END)	STANDARD FITTING CENTERLINES	FITTING CENTERLINE (IF DIFFERENT THAN STANDARD)
INLET			75"	
OUTLET			71"	
VENT (IF NEEDED)			78"	

STANDARD FITTING LOCATIONS SHOWN. PLEASE MAKE NECESSARY CHANGES ON TOP VIEW



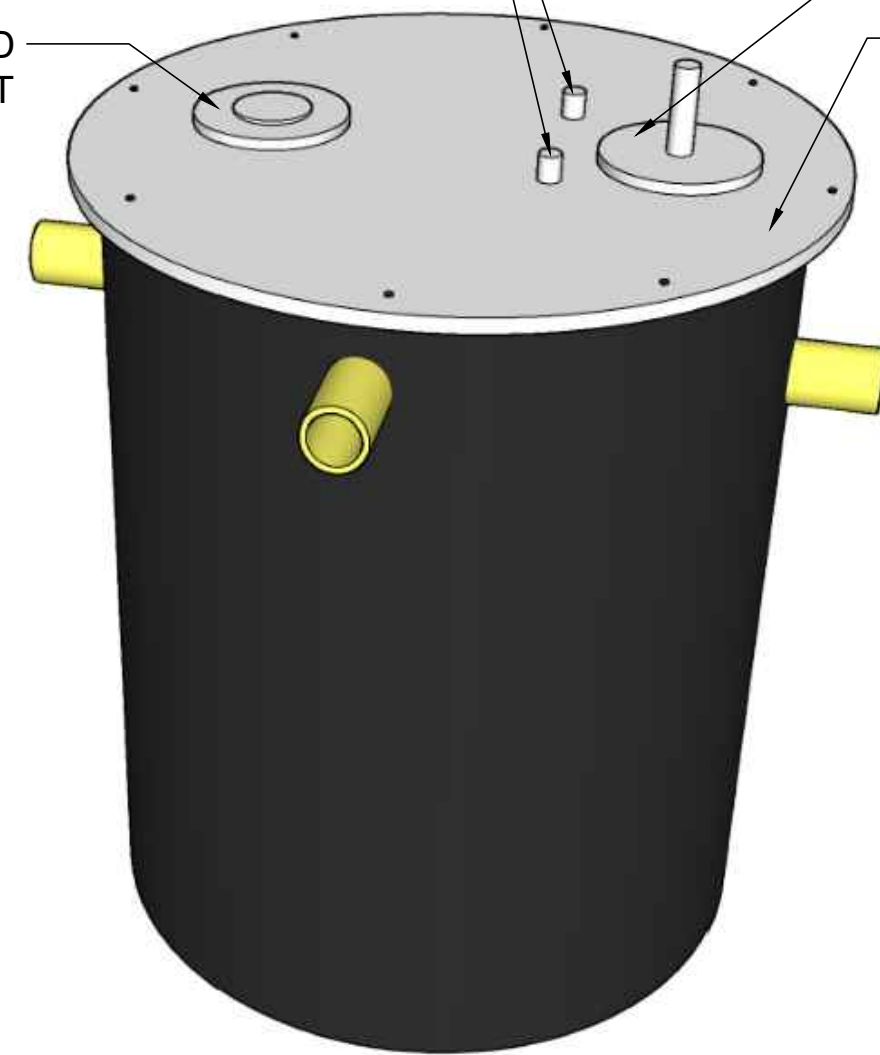
SECTION VIEW

$\frac{3}{8}$ " ACID & CAUSTIC INLETS

6" GASKETED FLANGED MIXER INLET

3" FLANGED PH PROBE INLET

BOLTED & GASKETED COVER



A

USABLE TANK GALLON CAPACITY: 650	WELDED BY:	UNLESS STATED OTHERWISE DIMENSIONS ARE IN INCHES	MATERIAL: HDPE - ASTM 2148			TITLE: NT-650/HDPE-2A CHEMICAL FEED & MIXING TANK	NT SERIES	REV:	 T&C PLASTICS WWW.TANDCPLASTICS.COM 732-780-5300	
	COMPLETED BY:		WEIGHT [lb]: 375 LBS.	DRAWN	DR		DATE	SHEET 1 OF 1		SIZE:
	REVIEWED BY:		DO NOT SCALE DRAWING	CHECKED				SCALE: 1:2		
THE INFORMATION CONTAINED IN THIS DRAWING IS THE SOLE PROPERTY OF TOWN & COUNTRY PLASTICS LLC. ANY REPRODUCTION IN PART OR AS A WHOLE WITHOUT THE WRITTEN PERMISSION OF TOWN & PLASTICS LLC IS PROHIBITED.										

4

3

2

1

A