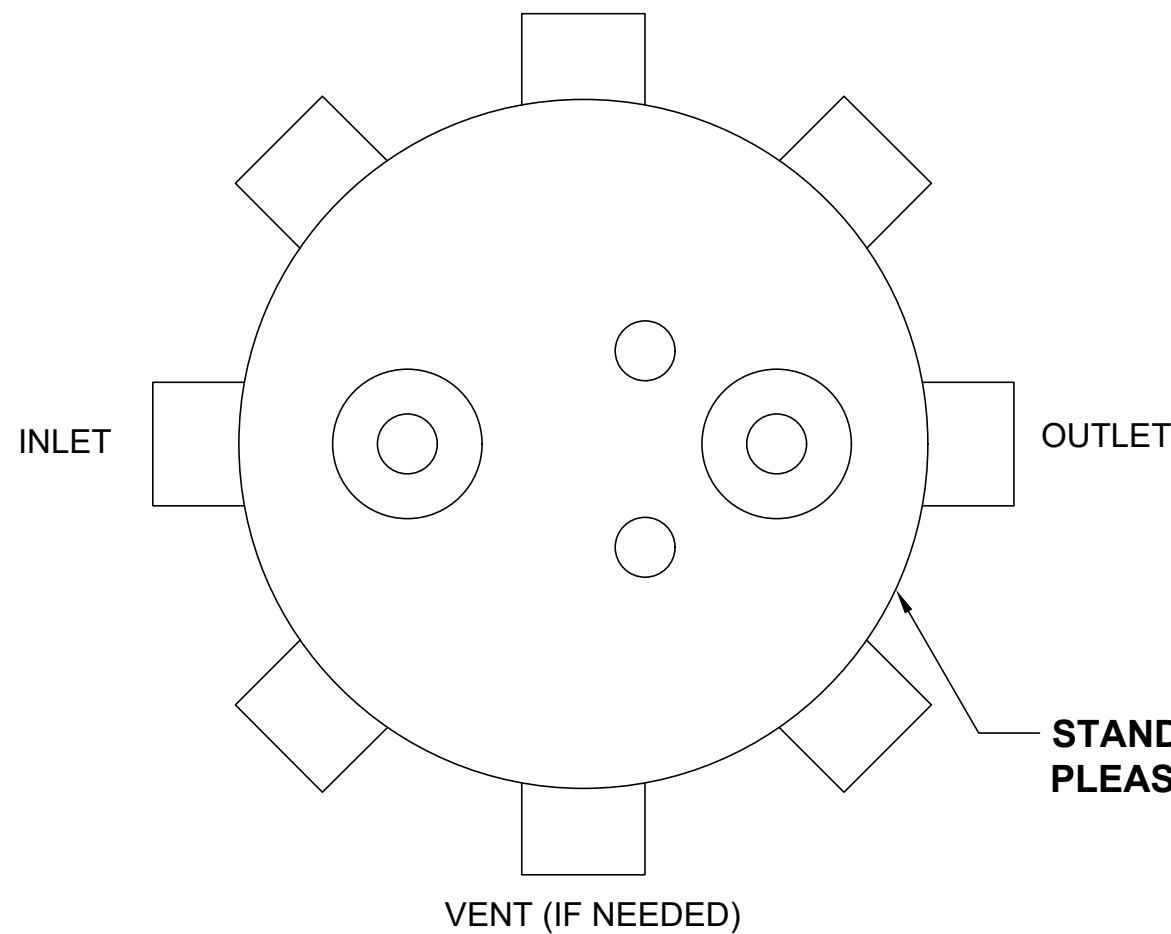


4 3 2 1

TOP VIEW



	FITTING SIZE	FITTING TYPE (MPT OR PLAIN END)	STANDARD FITTING CENTERLINES	FITTING CENTERLINE (IF DIFFERENT THAN STANDARD)
INLET			38"	
OUTLET			34"	
VENT (IF NEEDED)			42"	

STANDARD FITTING LOCATIONS SHOWN.
PLEASE MAKE NECESSARY CHANGES ON TOP VIEW

3/8" ACID & CAUSTIC INLETS

3" FLANGED PH PROBE INLET

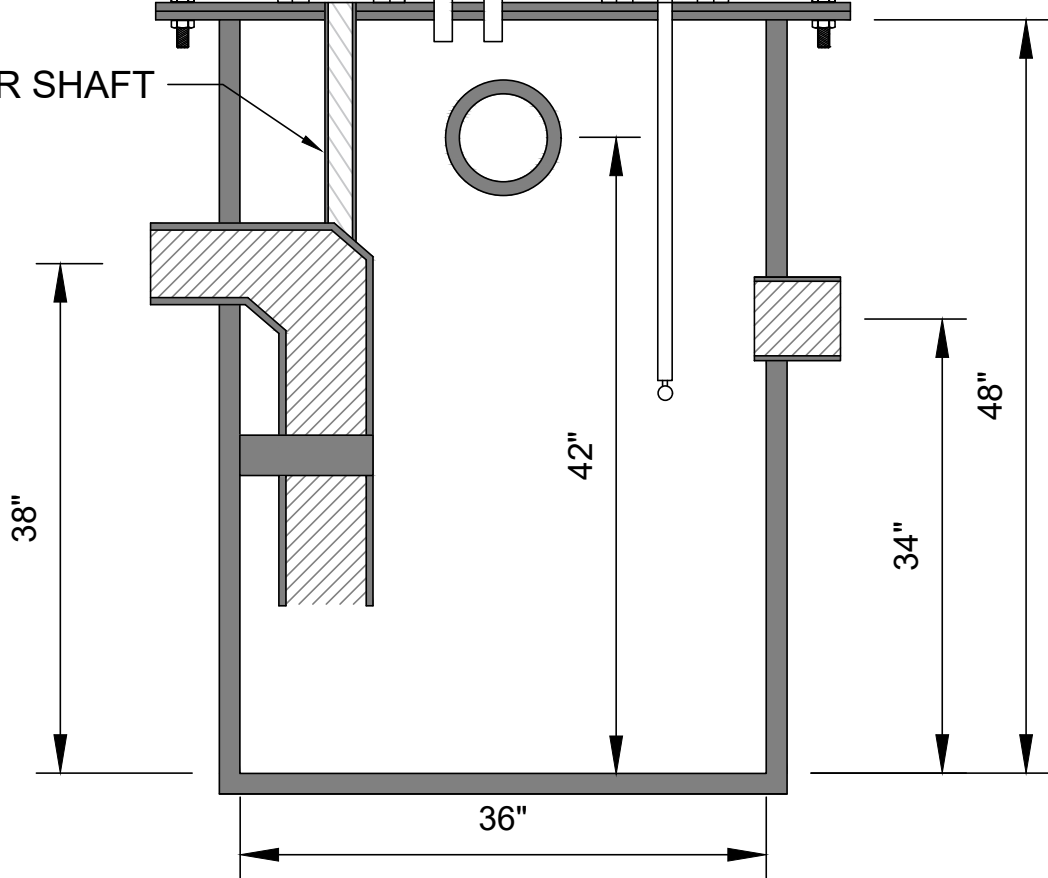
BOLTED & GASKETED COVER

6" GASKETED FLANGED
MIXER INLET

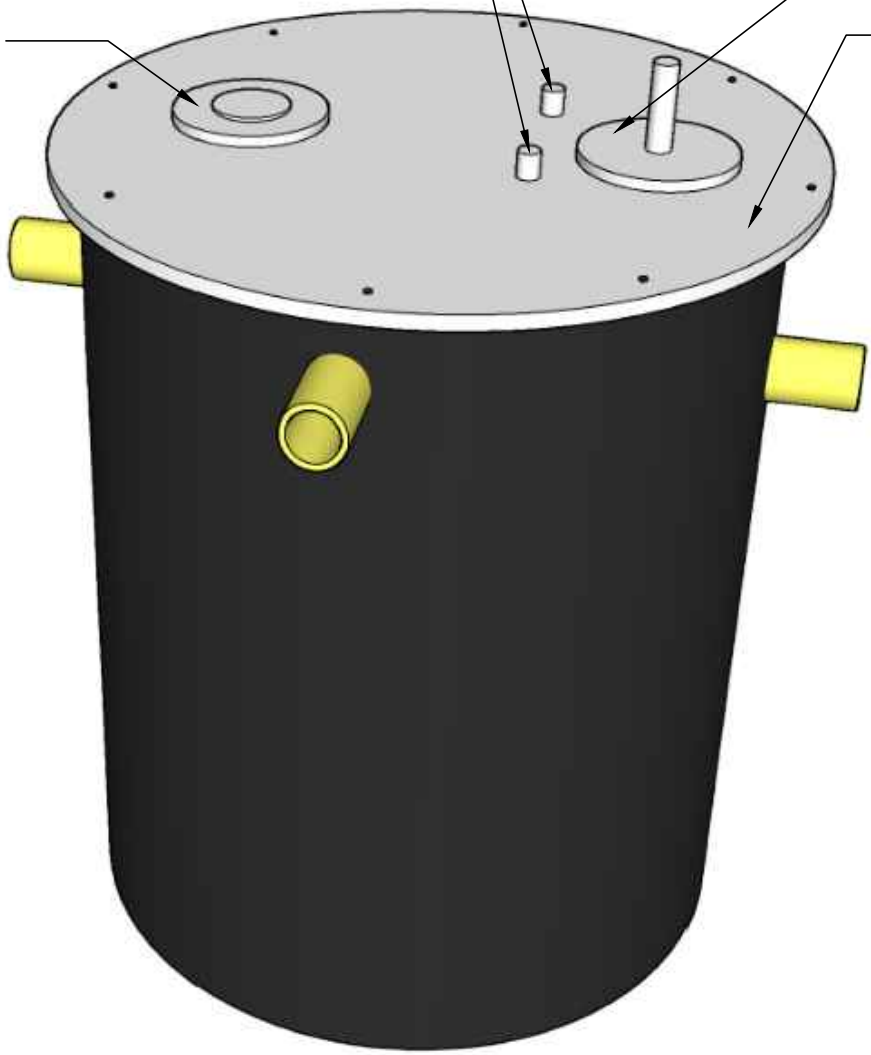
AGITATOR/MIXER
CLAMP MOUNTED

PH ELECTRODE
ASSEMBLY

MIXER SHAFT



SECTION VIEW



A

	WELDED BY:	UNLESS STATED OTHERWISE DIMENSIONS ARE IN INCHES	MATERIAL: <div>HDPE - ASTM 2148</div>				TITLE: <div>NT-200/HDPE-2A CHEMICAL FEED & MIXING TANK</div>	NT SERIES	REV:	<div>T&C PLASTICS</div> <div>WWW.TANDCPLASTICS.COM</div> <div>732-780-5300</div>		
	COMPLETED BY:		WEIGHT [lb]: <div>125 LBS.</div>		DRAWN	DR			10/22/2022		SHEET 1 OF 1	SIZE:
USABLE TANK GALLON CAPACITY: <div>200</div>	REVIEWED BY:		DO NOT SCALE DRAWING		CHECKED						SCALE: 1:2	
THE INFORMATION CONTAINED IN THIS DRAWING IS THE SOLE PROPERTY OF TOWN & COUNTRY PLASTICS LLC. ANY REPRODUCTION IN PART OR AS A WHOLE WITHOUT THE WRITTEN PERMISSION OF TOWN & PLASTICS LLC IS PROHIBITED.												

4 3 2 1