

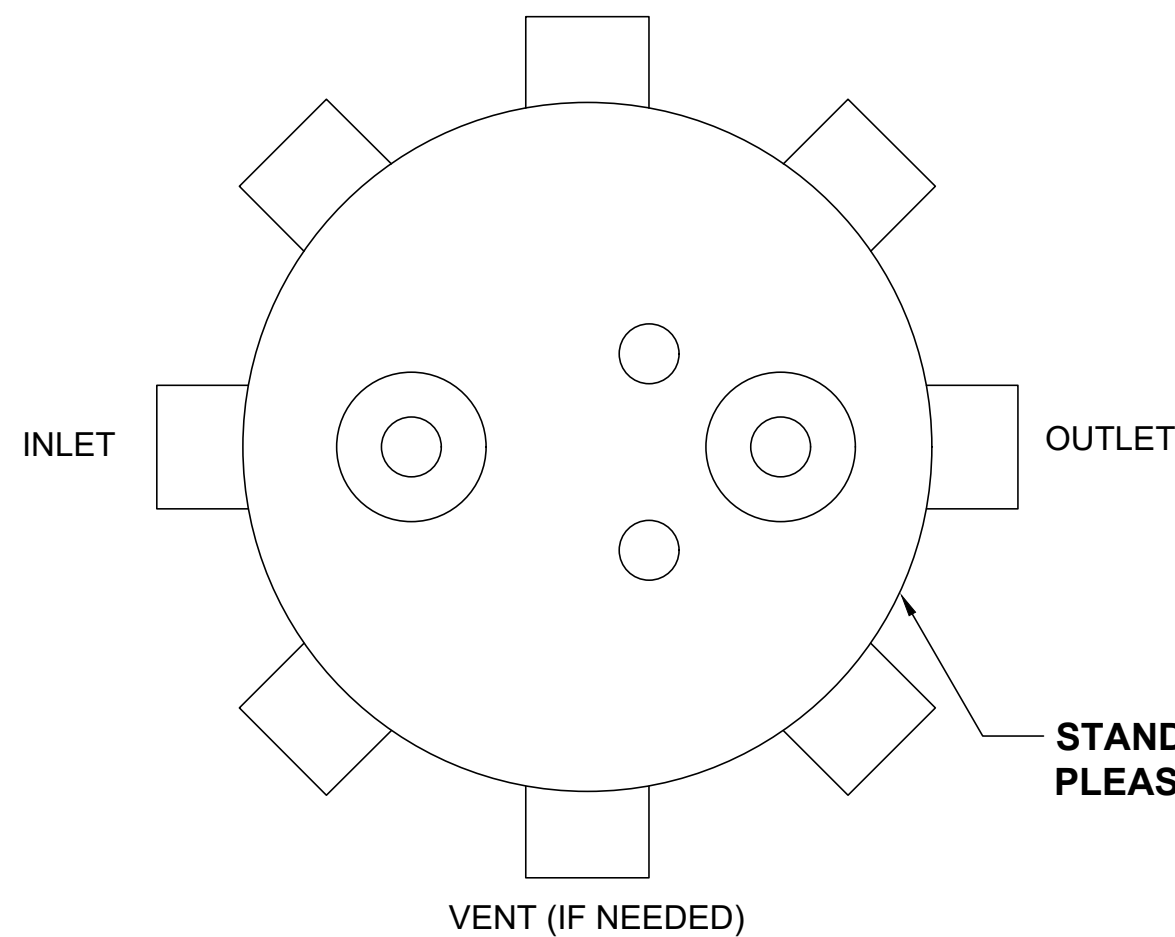
4

3

2

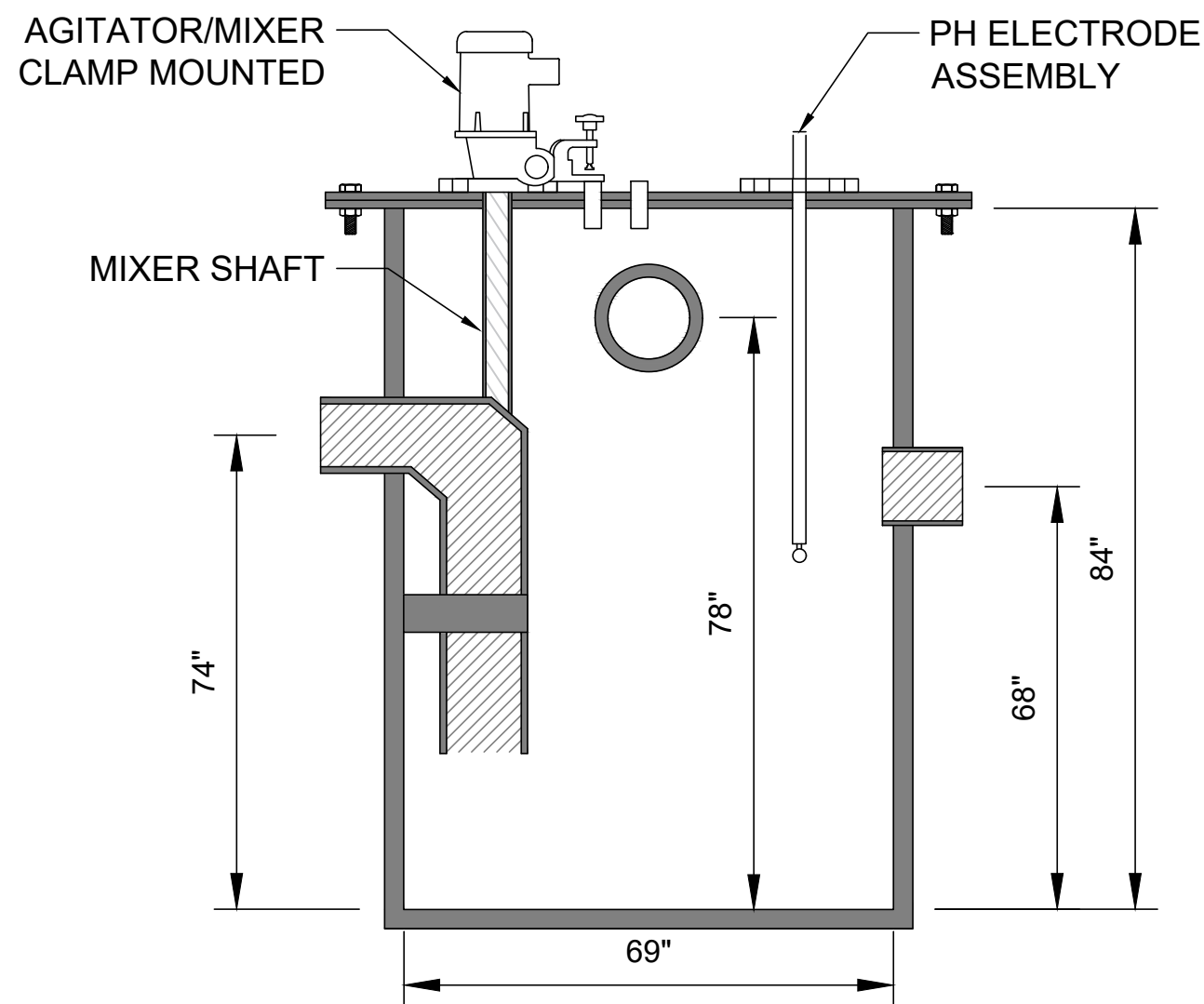
1

TOP VIEW



	FITTING SIZE	FITTING TYPE (MPT OR PLAIN END)	STANDARD FITTING CENTERLINES	FITTING CENTERLINE (IF DIFFERENT THAN STANDARD)
INLET			74"	
OUTLET			68"	
VENT (IF NEEDED)			78"	

STANDARD FITTING LOCATIONS SHOWN. PLEASE MAKE NECESSARY CHANGES ON TOP VIEW



SECTION VIEW

3/8" ACID & CAUSTIC INLETS

6" GASKETED FLANGED MIXER INLET

3" FLANGED PH PROBE INLET

BOLTED & GASKETED COVER



A

USABLE TANK GALLON CAPACITY: 1200	WELDED BY:	UNLESS STATED OTHERWISE DIMENSIONS ARE IN INCHES	MATERIAL: HDPE - ASTM 2148			TITLE: NT-1200/HDPE-2A CHEMICAL FEED & MIXING TANK	REV:	NT SERIES	REV:	T&C PLASTICS WWW.TANDCPLASTICS.COM 732-780-5300			
	COMPLETED BY:		WEIGHT [lb]: 600 LBS.	DRAWN	DR						DATE 10/22/2022	SHEET 1 OF 1	SIZE:
	REVIEWED BY:		DO NOT SCALE DRAWING	CHECKED								SCALE: 1:2	
THE INFORMATION CONTAINED IN THIS DRAWING IS THE SOLE PROPERTY OF TOWN & COUNTRY PLASTICS LLC. ANY REPRODUCTION IN PART OR AS A WHOLE WITHOUT THE WRITTEN PERMISSION OF TOWN & PLASTICS LLC IS PROHIBITED.													

4

3

2

1

A