

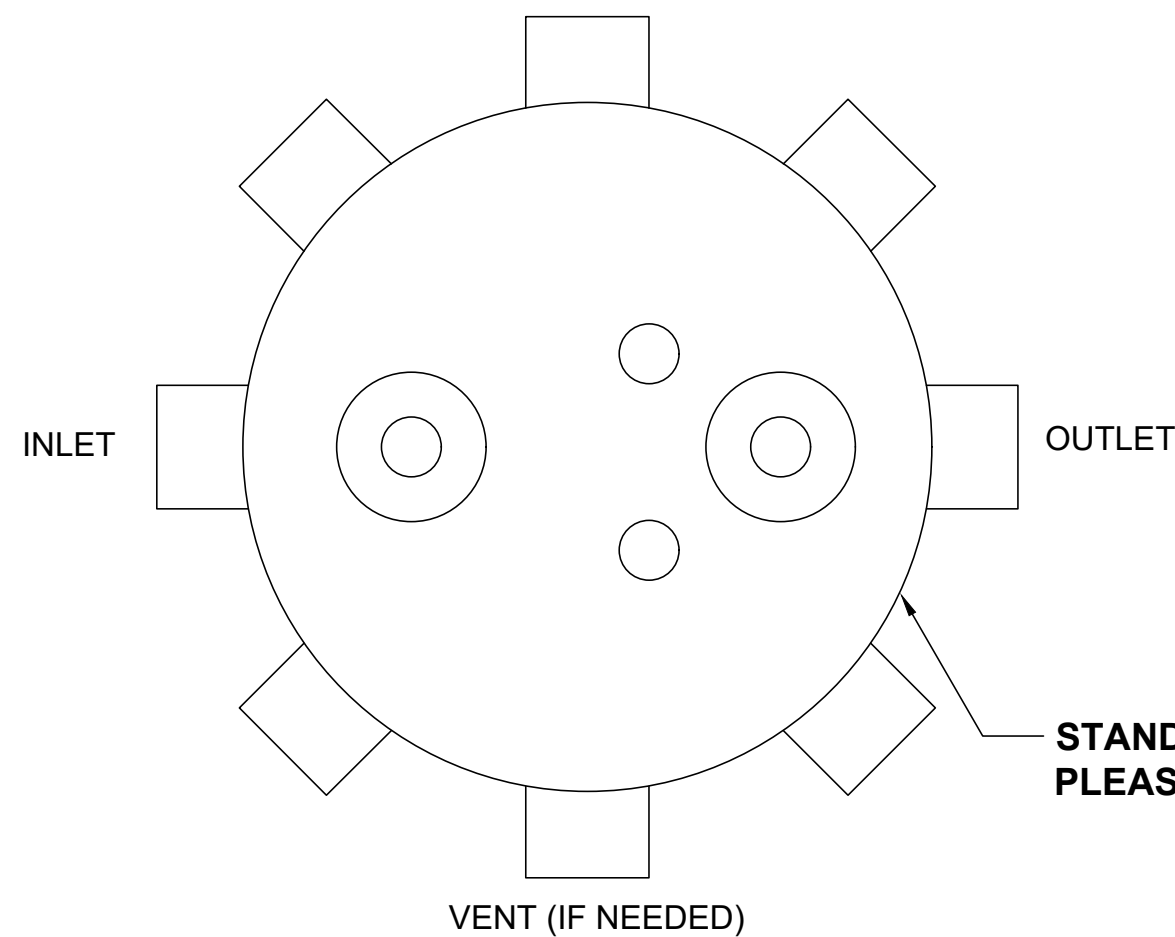
4

3

2

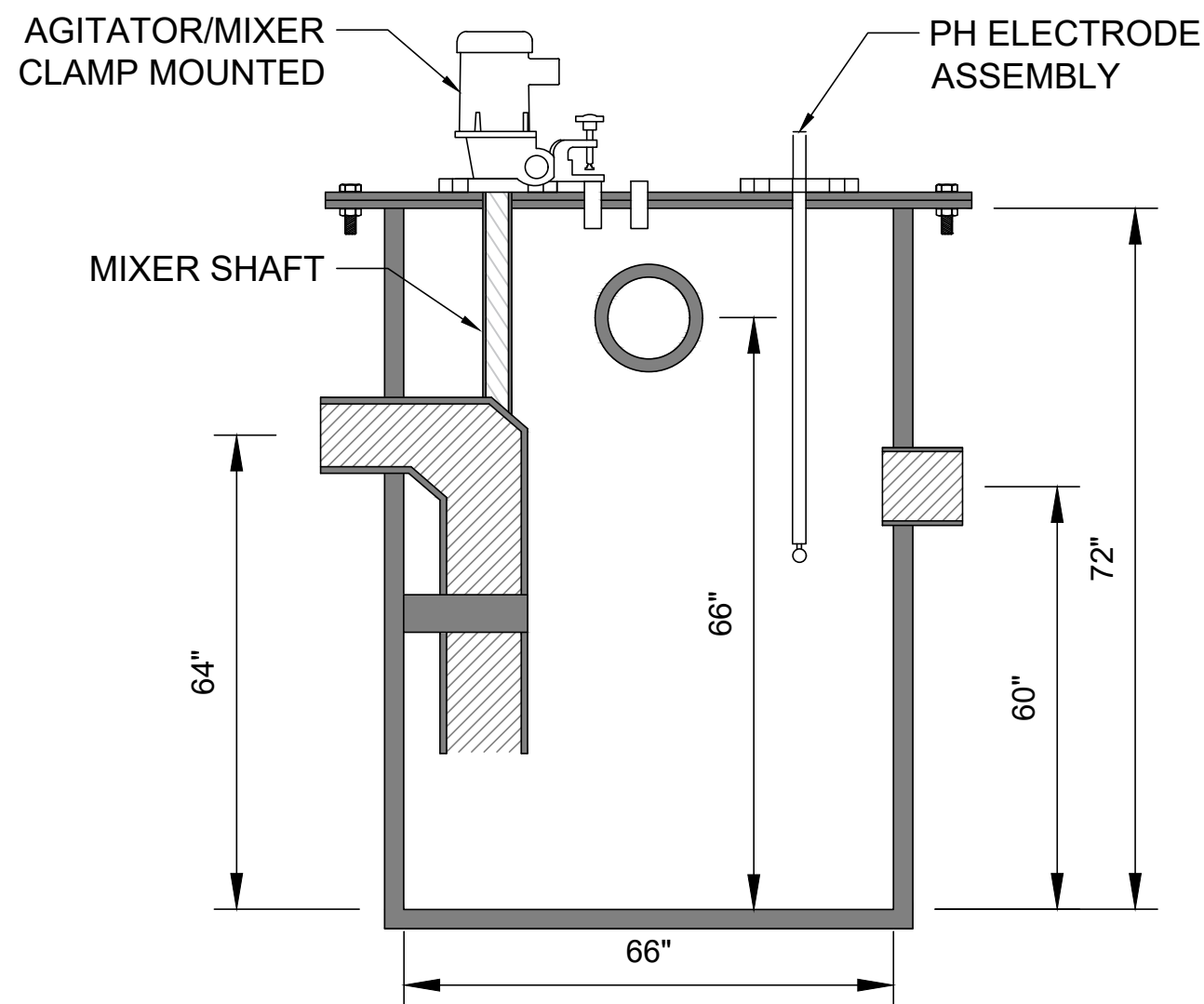
1

**TOP VIEW**

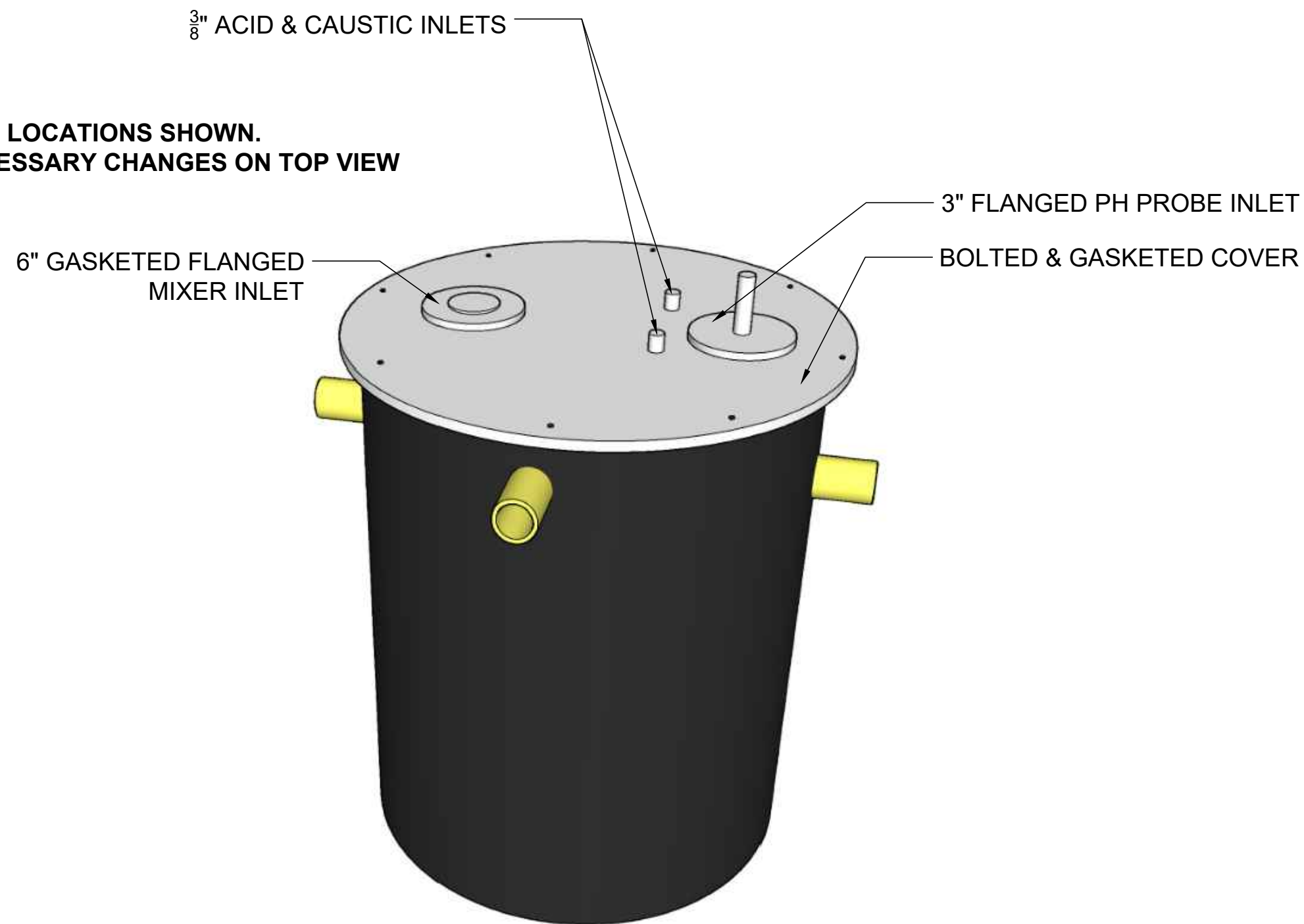


	FITTING SIZE	FITTING TYPE (MPT OR PLAIN END)	STANDARD FITTING CENTERLINES	FITTING CENTERLINE (IF DIFFERENT THAN STANDARD)
INLET			64"	
OUTLET			60"	
VENT (IF NEEDED)			66"	

STANDARD FITTING LOCATIONS SHOWN. PLEASE MAKE NECESSARY CHANGES ON TOP VIEW



**SECTION VIEW**



A

A

USABLE TANK GALLON CAPACITY: <b>1000</b>	WELDED BY:	UNLESS STATED OTHERWISE DIMENSIONS ARE IN INCHES	MATERIAL: <b>HDPE - ASTM 2148</b>			TITLE: <b>NT-1000/HDPE-2A CHEMICAL FEED &amp; MIXING TANK</b>	NT SERIES	REV:	 <b>T&amp;C PLASTICS</b> WWW.TANDCPLASTICS.COM 732-780-5300	
	COMPLETED BY:		WEIGHT [lb]: <b>550 LBS.</b>	DRAWN	DR		DATE	SHEET 1 OF 1		SIZE:
	REVIEWED BY:		DO NOT SCALE DRAWING	CHECKED				SCALE: 1:2		
THE INFORMATION CONTAINED IN THIS DRAWING IS THE SOLE PROPERTY OF TOWN & COUNTRY PLASTICS LLC. ANY REPRODUCTION IN PART OR AS A WHOLE WITHOUT THE WRITTEN PERMISSION OF TOWN & PLASTICS LLC IS PROHIBITED.										

4

3

2

1