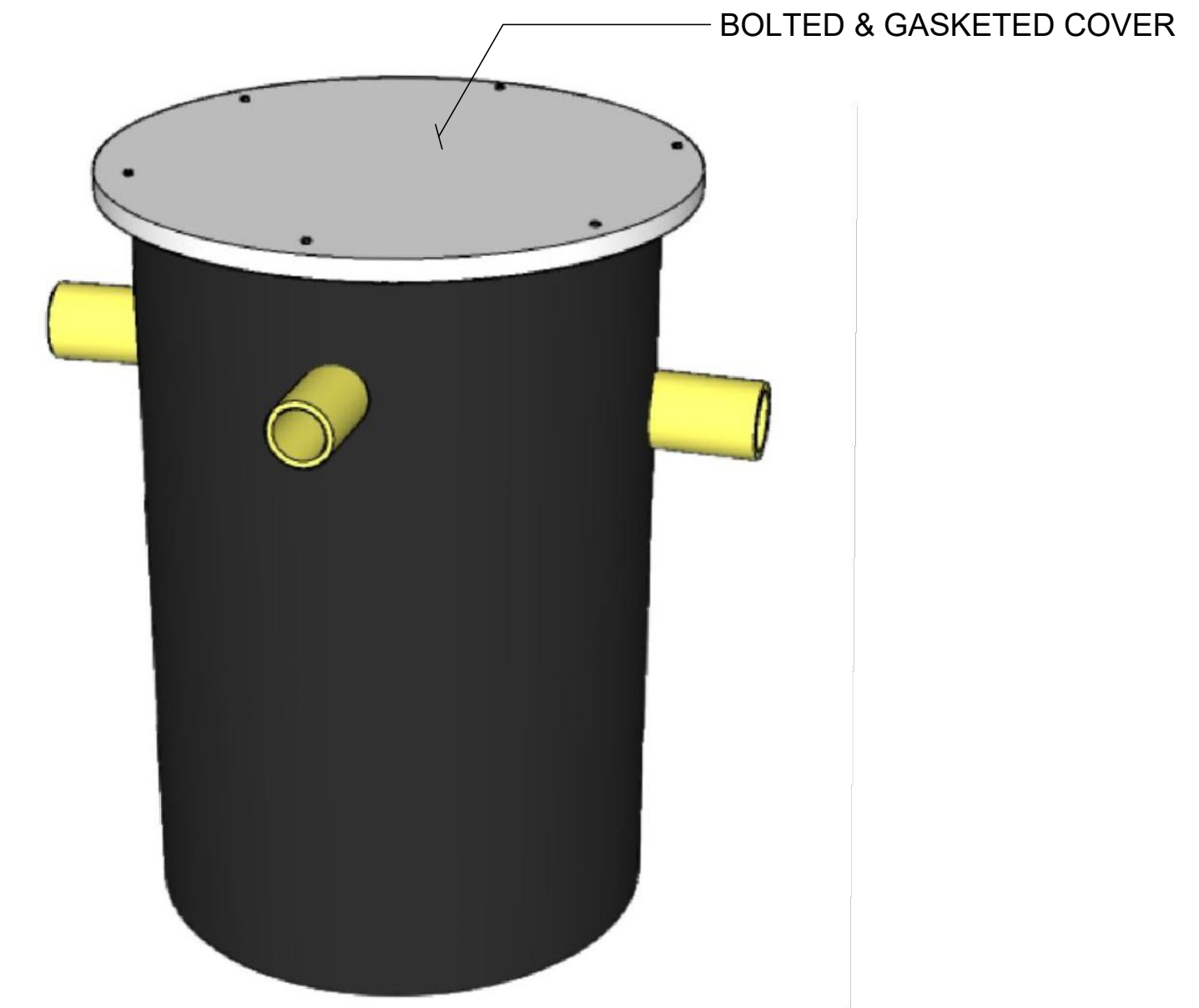
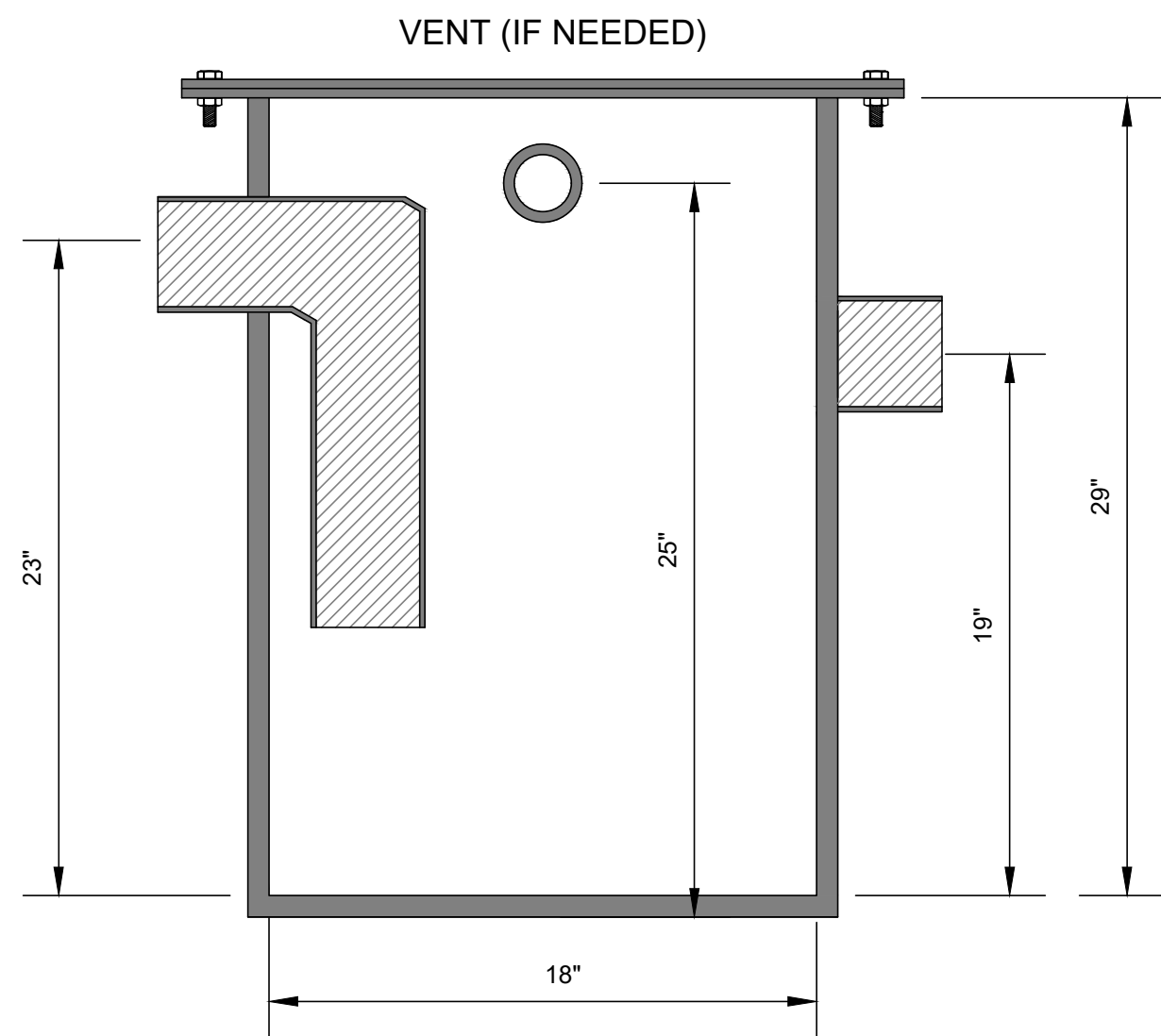


| | FITTING SIZE | FITTING TYPE (MPT OR PLAIN END) | STANDARD FITTING CENTERLINES | FITTING CENTERLINE (IF DIFFERENT THAN STANDARD) |
|------------------|--------------|---------------------------------|------------------------------|---|
| INLET | | | 23 | |
| OUTLET | | | 19 | |
| VENT (IF NEEDED) | | | 25 | |

STANDARD FITTING LOCATIONS SHOWN.
PLEASE MAKE NECESSARY CHANGES ON TOP VIEW



SECTION VIEW

| | | | | | | | | | | |
|--|---------------|--|--------------------------------------|---------|------------|---|-----------|--------------|---|-------|
| TANK GALLON CAPACITY: 19 | WELDED BY: | UNLESS STATED OTHERWISE DIMENSIONS ARE IN INCHES | MATERIAL: HDPE - ASTM 2148 | | | TITLE: NT-30 / HDPE NEUTRALIZATION TANK | NT SERIES | REV: | WWW.TANDCPLASTICS.COM 732-780-5300 | |
| TANK GALLON CAPACITY WITH LIMESTONE: 6 | COMPLETED BY: | | WEIGHT [lb]: 35 LBS. | NAME | DATE | | | SHEET 1 OF 1 | | SIZE: |
| LIMESTONE REQUIRED: 200 LBS. | REVIEWED BY: | | DO NOT SCALE DRAWING | CHECKED | 08/30/2022 | | | SCALE: 1:2 | | |
| THE INFORMATION CONTAINED IN THIS DRAWING IS THE SOLE PROPERTY OF TOWN & COUNTRY PLASTICS LLC. ANY REPRODUCTION IN PART OR AS A WHOLE WITHOUT THE WRITTEN PERMISSION OF TOWN & PLASTICS LLC IS PROHIBITED. | | | | | | | | | | |