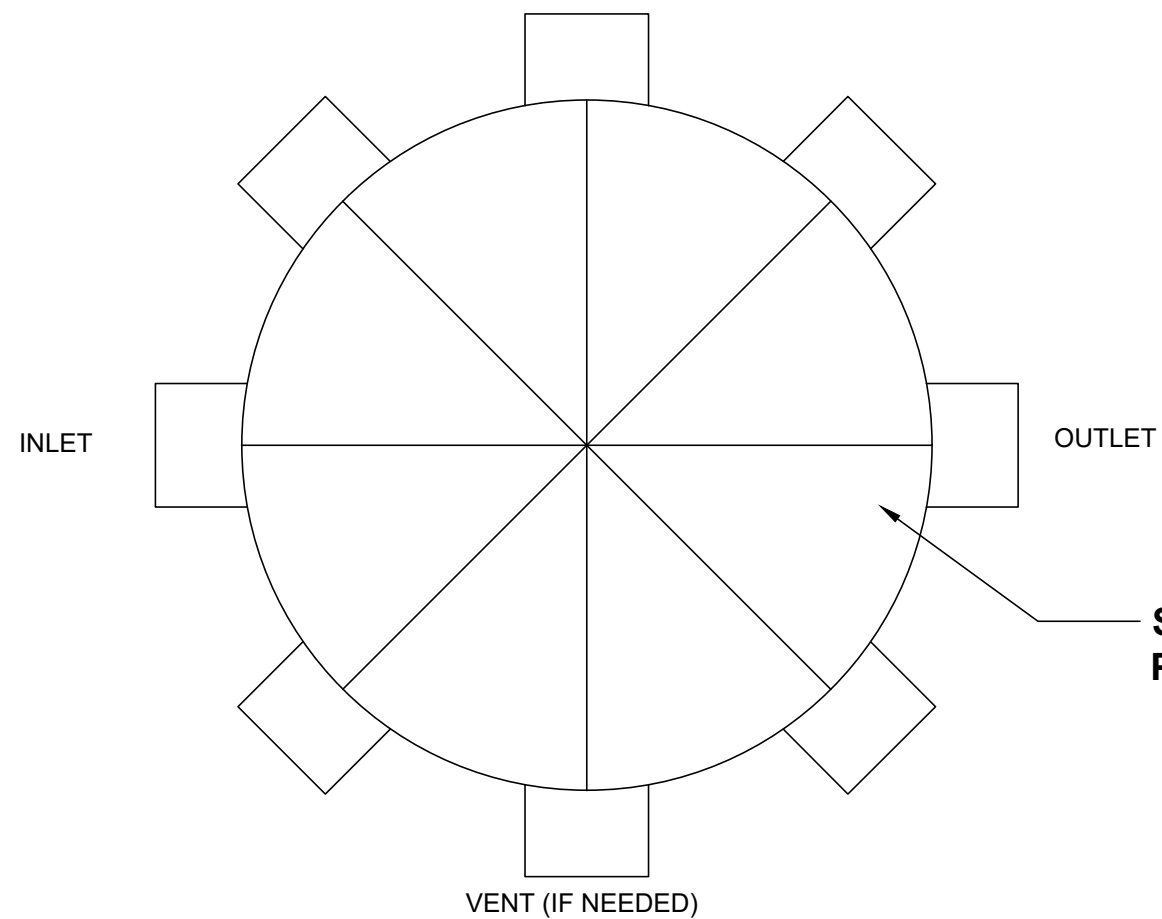


4 3 2 1

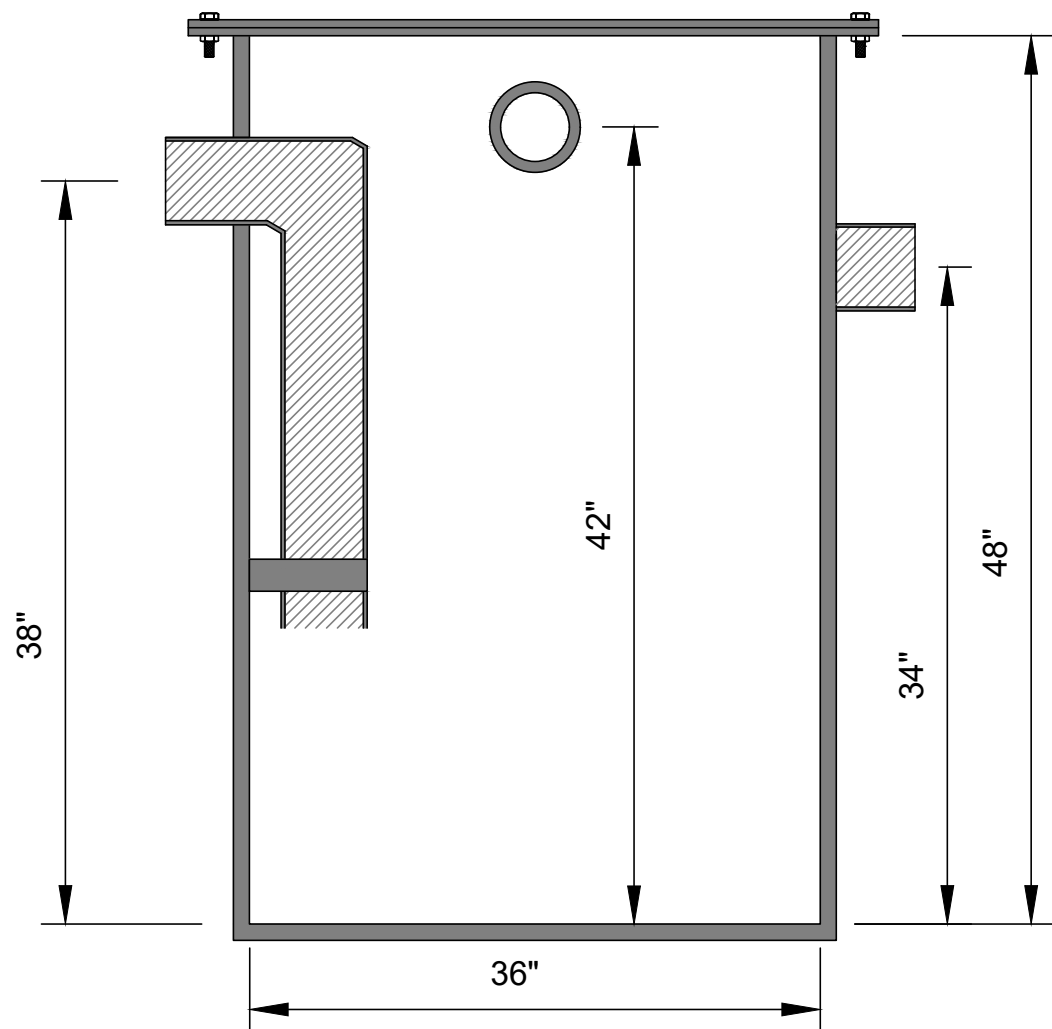
**TOP VIEW**



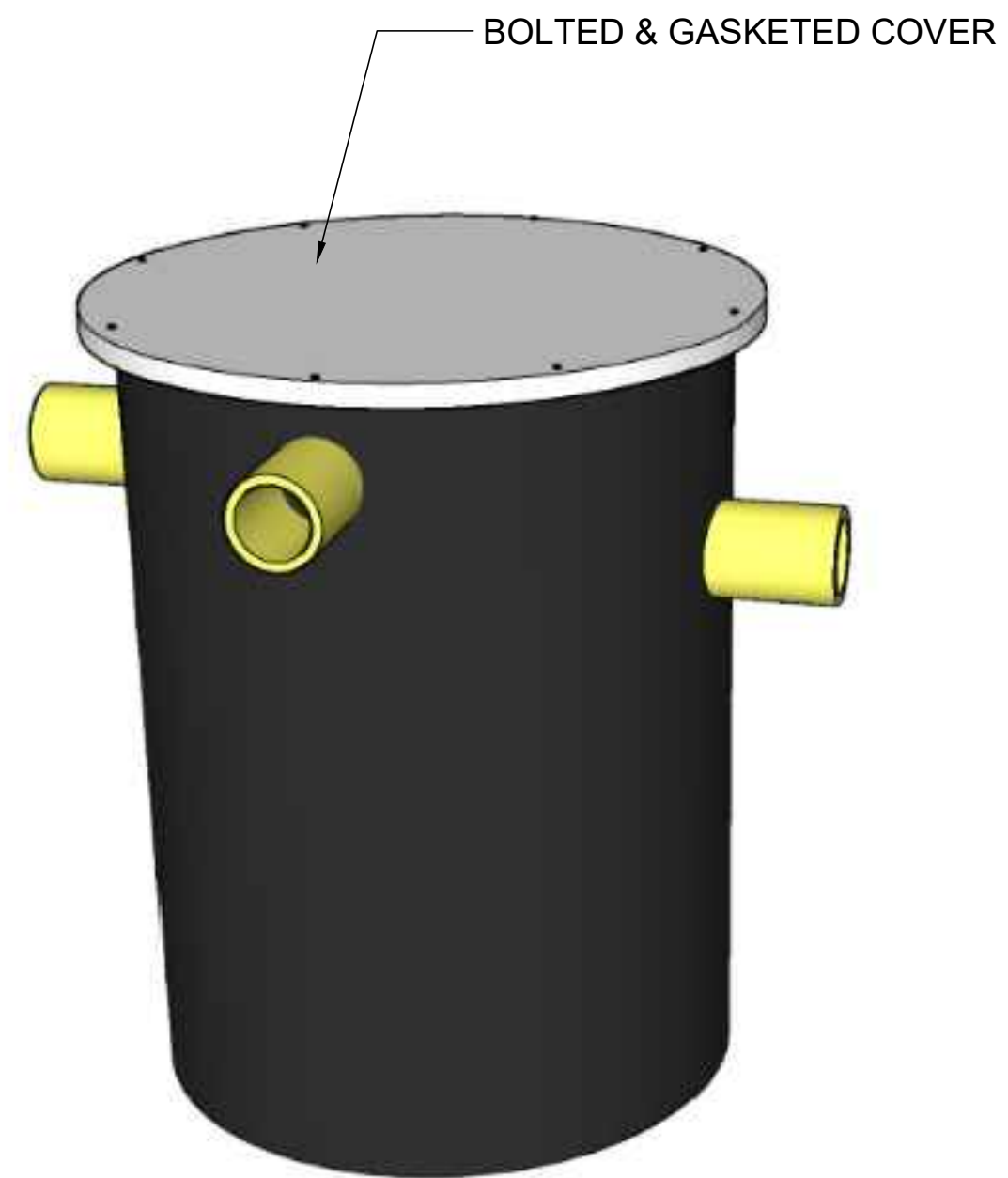
	FITTING SIZE	FITTING TYPE (MPT OR PLAIN END)	STANDARD FITTING CENTERLINES	FITTING CENTERLINE (IF DIFFERENT THAN STANDARD)
INLET			38"	
OUTLET			34"	
VENT (IF NEEDED)			42"	

STANDARD FITTING LOCATIONS SHOWN. PLEASE MAKE NECESSARY CHANGES ON TOP VIEW

VENT (IF NEEDED)



**SECTION VIEW**



BOLTED & GASKETED COVER

TANK GALLON CAPACITY: <b>137</b>	WELDED BY:	UNLESS STATED OTHERWISE DIMENSIONS ARE IN INCHES	MATERIAL: <b>HDPE - ASTM 2148</b>			TITLE: <b>NT-200 / HDPE NEUTRALIZATION TANK</b>	NT SERIES	REV:	 WWW.TANDCPLASTICS.COM 732-780-5300
TANK GALLON CAPACITY WITH LIMESTONE: <b>46</b>	COMPLETED BY:		WEIGHT [lb]: <b>125 LBS.</b>	NAME	DATE	SHEET 1 OF 1	SIZE:		
LIMESTONE REQUIRED: <b>2,500 LBS.</b>	REVIEWED BY:		DO NOT SCALE DRAWING	DRAWN	DR	08/30/2022	SCALE: 1:2		
THE INFORMATION CONTAINED IN THIS DRAWING IS THE SOLE PROPERTY OF TOWN & COUNTRY PLASTICS LLC. ANY REPRODUCTION IN PART OR AS A WHOLE WITHOUT THE WRITTEN PERMISSION OF TOWN & PLASTICS LLC IS PROHIBITED.									

4 3 2 1